

AMVEX Vacuum Regulator

Specifically designed for general patient care

The Amvex Vacuum Regulator is one of the most technologically advanced in the healthcare industry and is easy to service and maintain.

Features

- Analogue gauge with large white background
- Modular design
- Removable back plate
- Continuous/intermittent unit includes just six components
- Small and light unit
- Made of flexible ABS polymer
- Shock absorbent
- Upgrade from analogue to digital or from continuous to continuous/intermittent

Benefits

- Simple to read gauge
- Easy to service
- Easy to clean: unit can simply be reverse flushed with a cold steriliser
- Design eliminates excess weight which can stress the wall outlets and cause leaks
- Easy to handle
- Robust design withstands dropping or mishandling
- Wider options for patients

Inlet PB



Inlet BS



Inlet AS



Oxygen Vacuum Regulator - Adult

Part Number

INCLUDES INLET FITTING AND VACUUM REGULATOR

Regulator/Inlet Standard

PB : VR-C3IT-F2-A/1 ONLY AVAILABLE IN N.Z.

BS : VR-C3IT-F2-A/2 ONLY AVAILABLE IN N.Z.

AS : VR-C3IT-F2-A/4 AVAILABLE IN AUST. AND N.Z.

Specifications

- Gauge range: paediatric 0-160, standard 0-300, high 0-760 mmHg
- Inlet fitting: Puritan Bennett, British standard or Australian standard
- Outlet fitting: tubing nipple
- Weight: 380 g
- Accuracy of +/- 3% of full scale

Paediatric

- Flow range: 0-40 litres per minute (lpm)
- Flow rate setting: increments of 5mm Hg

Adult

- Flow range: 0-80 litres per minute (lpm)
- Flow rate setting: increments of 5mm Hg

Manufacturer

AMVEX

Quality Assurance

This device is designed to conform to CE standards and is designed and manufactured to meet international standards.

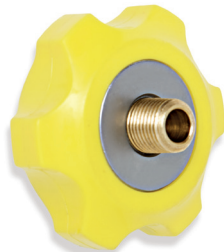
Inlet PB



Inlet BS



Inlet AS



Oxygen Vacuum Regulator – Paediatric

Part Number

INCLUDES INLET FITTING AND VACUUM REGULATOR

Regulator/Inlet Standard

PB : VR-P2IT-F2A/1 [ONLY AVAILABLE IN N.Z.](#)

BS : VR-P2IT-F2A/2 [ONLY AVAILABLE IN N.Z.](#)

AS : VR-P2IT-F2A/4 [AVAILABLE IN AUST. AND N.Z.](#)

Australia: BOC Limited ABN 95 000 029 729, BOC Healthcare 10 Julius Ave, North Ryde NSW 2113

T: 1300 363 109 F: 1300 363 438 E: hospital.care@boc.com

New Zealand: BOC Limited WN007748, BOC Healthcare NZ, 988 Great South Rd, Penrose Auckland,

T: 0800 656 334 F: 0800 275 275 E: HealthcareNZ@boc.com

Details given in this document are believed to be correct at the time of printing. While proper care has been taken in the preparation, no liability for injury or damage resulting from its use can be accepted. BOC is a trading name of BOC Limited, a member of The Linde Group. © BOC Limited 2010. Reproduction without permission is strictly prohibited.